

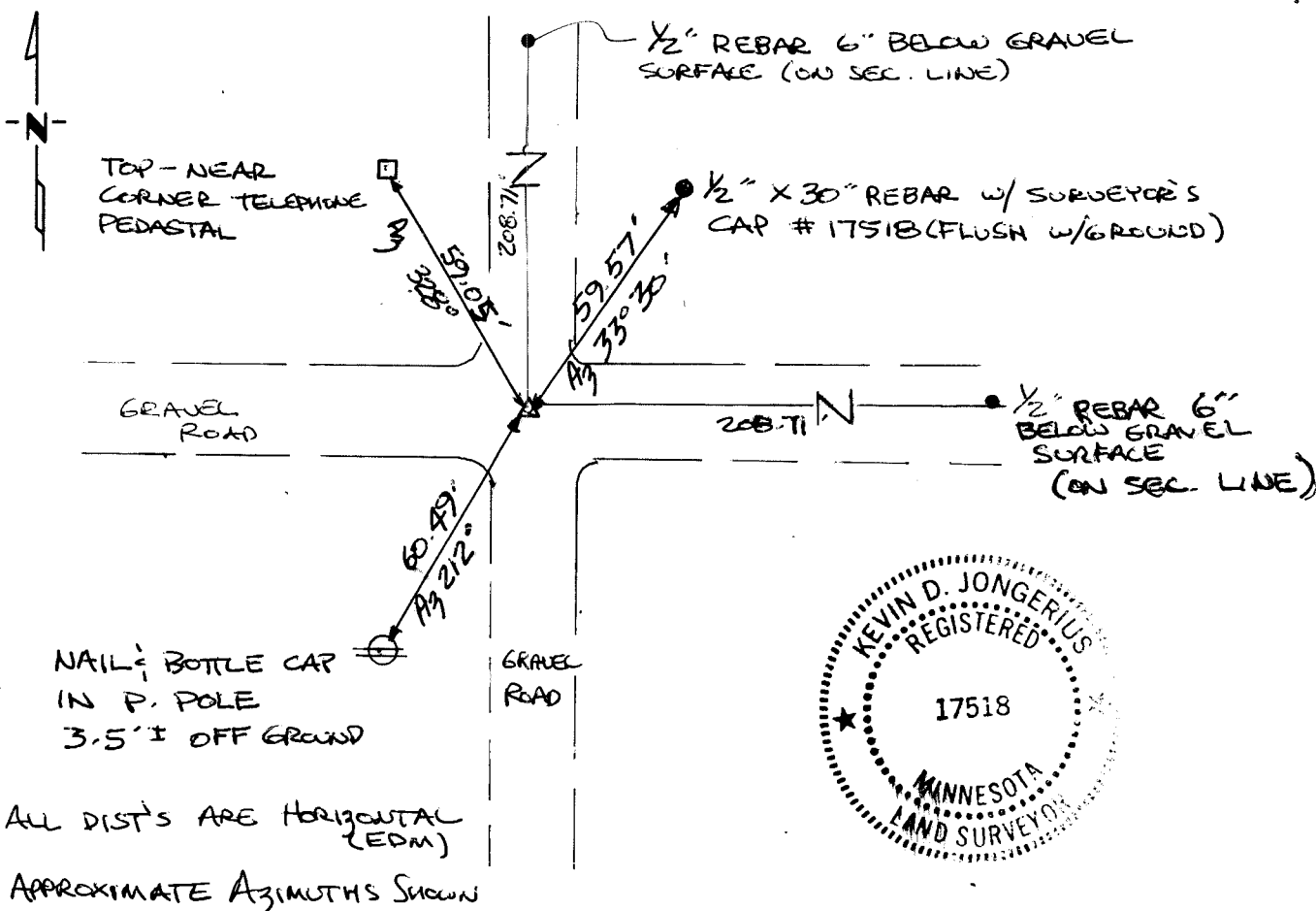
# CERTIFICATE OF LOCATION OF GOVERNMENT CORNER

SW Corner of Section 20, Township 105, Range 42, S<sup>1</sup>/<sub>2</sub> P.M.  
STATE OF MINNESOTA, County of MURRAY

At the corner location shown on the sketch:

- On 11-2-92 found a 3/4" REBAR 6" BELOW GRAVEL SURFACE OF CO. ROAD #1  
 left monument as found,  lowered monument,  removed monument (explain)
- On \_\_\_\_\_ placed a \_\_\_\_\_

## SKETCH OF REFERENCE TIES



Statement of evidence relative to this corner location is on back of page.

I hereby certify that this document and the data contained herein was prepared by me or under my direct supervision.

Kevin D. Jongerius 12-8-92  
SIGNATURE DATE  
 Kevin D. Jongerius  
 Registration No. 17518

Land Surveyor,  Professional Engineer  
 County Surveyor,  County Engineer

OFFICE OF THE COUNTY RECORDER  
 County of MURRAY

I hereby certify that this document was filed in the Co. Recorders office at \_\_\_\_\_ .M. on the \_\_\_\_\_ day of JAN 14 1993 A.D., 19 \_\_\_\_\_

County Recorder J. James V. Johnson  
 By \_\_\_\_\_, Deputy  
 DOCUMENT NO. \_\_\_\_\_